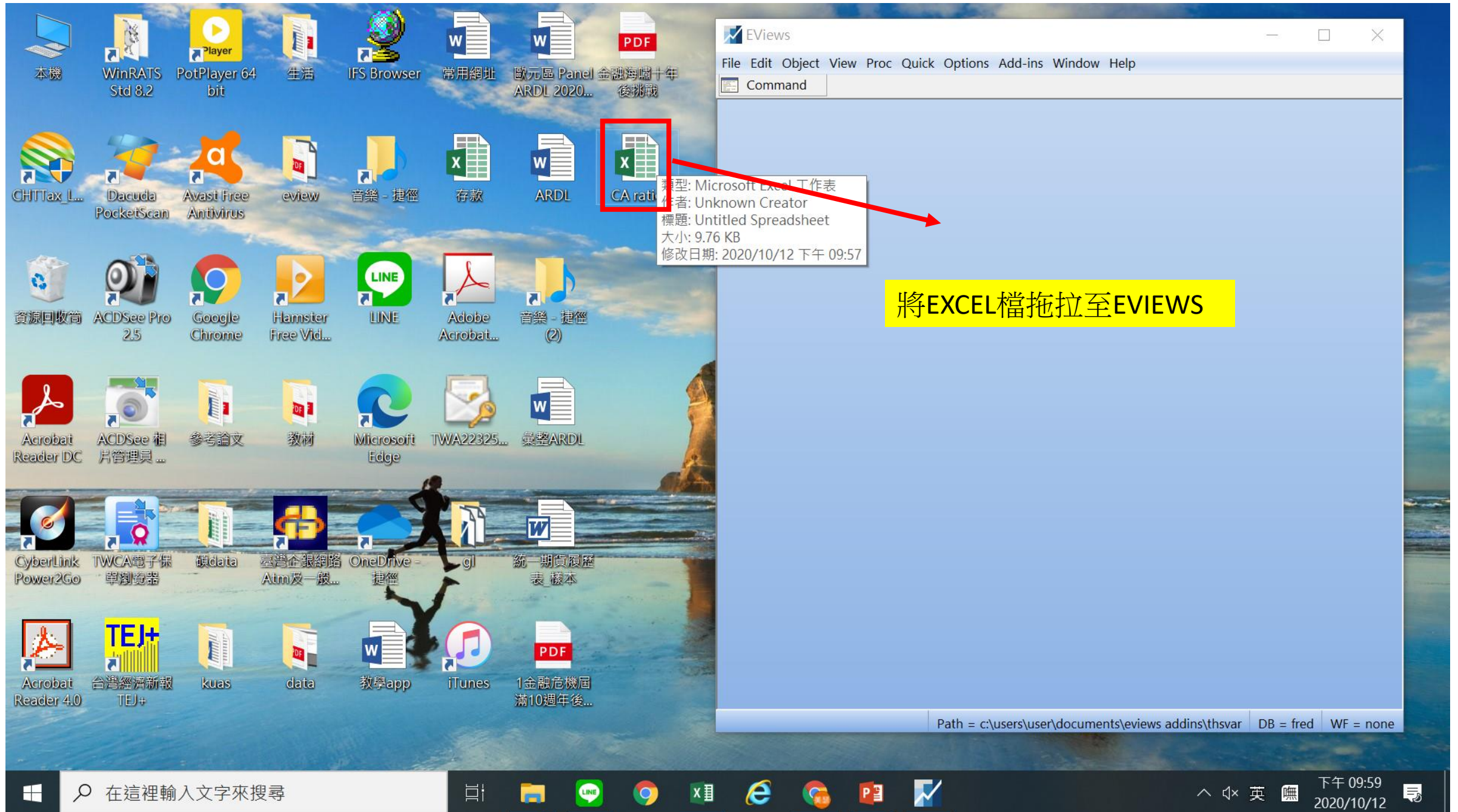


EVIEWWS操作步驟



本機

CA ratio

CHTTax_L...

資源回收筒 A

Acrobat Reader DC

CyberLink Power2Go

EViews

File Edit Object View Proc Quick Options Add-ins Window Help

Command

Excel Read - Step 1 of 3

Cell Range

☒ Predefined range

Sheet: w1

Start cell: \$A\$1

End cell: \$G\$23

☐ Custom range

w1!\$A\$1:\$G\$23

	China	Japan	Korea	Singapore	Advanced economies	Emerging market and developing economies
2000	1.7	2.7	1.8	11.1	-0.9	1.4
2001	1.3	2	0.4	14.4	-0.9	0.8
2002	2.4	2.7	0.6	14.9	-0.8	1.3
2003	2.6	3.1	1.6	24.3	-0.7	2.1
2004	3.5	3.8	3.7	19.3	-0.6	2.4
2005	5.8	3.6	1.3	23.3	-1.1	4
2006	8.4	3.9	0.2	26.9	-1.1	4.8
2007	9.9	4.7	0.9	27.1	-0.9	3.7
2008	9.2	2.8	0.2	15.1	-1.3	3.4
2009	4.8	2.8	3.5	16.4	-0.2	1.3
2010	3.9	3.9	2.4	22.9	0	1.2
2011	1.8	2.1	1.3	22.2	-0.1	1.4
2012	2.5	1	3.8	17.6	0.1	1.2
2013	1.5	0.9	5.6	15.7	0.5	0.6
2014	2.2	0.8	5.6	18	0.5	0.6

☐ Read series by row (transpose incoming data)

取消

< 上一步(B)

下一步(N) >

完成

Reading data...

Path = c:\users\user\documents\views addins\thsvr DB = fred WF = none

EViews

File Edit Object View Proc Quick Options Add-ins Window Help

Command

Excel Read - Step 2 of 3

Column headers

Header lines: 1

Header type: Names only

Clear Edited Column Info

Text representing NA

#N/A

Column info

Click in preview to select column for editing

Name: Series01

Description:

Data type: Number

Series01	China	Japan	Korea	Singapore	Advanced economies	Emerging market and developing economies
2000	1.7	2.7	1.8	11.1	-0.9	1.4
2001	1.3	2	0.4	14.4	-0.9	0.8
2002	2.4	2.7	0.6	14.9	-0.8	1.3
2003	2.6	3.1	1.6	24.3	-0.7	2.1
2004	3.5	3.8	3.7	19.3	-0.6	2.4
2005	5.8	3.6	1.3	23.3	-1.1	4
2006	8.4	3.9	0.2	26.9	-1.1	4.8
2007	9.9	4.7	0.9	27.1	-0.9	3.7
2008	9.2	2.8	0.2	15.1	-1.3	3.4
2009	4.8	2.8	3.5	16.4	-0.2	1.3
2010	3.9	3.9	2.4	22.9	0	1.2
2011	1.8	2.1	1.3	22.2	-0.1	1.4
2012	2.5	1	3.8	17.6	0.1	1.2

☐ Read series by row (transpose incoming data)

取消

< 上一步(B)

下一步(N) >

完成

檔案

剪下

複製

貼上

剪貼簿

4

5

6

7

8

9

EViews

File Edit Object View Proc Quick Options Add-ins Window Help

Command

Excel Read - Step 3 of 3

Import method

Create new workflow

Import options

Rename Series

Frequency Conversion

Structure of the Data to be Imported

Basic structure

Dated - specified by date series

Unstructured / Undated

Dated - regular frequency

Dated - specified by date series

Dated Panel

Undated with ID series

Undated Panel

Frequency: Annual

	SERIES01	CHINA	JAPAN	KOREA	SINGAPORE	ADVANCED_ECONOMIES	EMERG
1	2000	1.7	2.7	1.8	11.1	-0.9	
2	2001	1.3	2.0	0.4	14.4	-0.9	
3	2002	2.4	2.7	0.6	14.9	-0.8	
4	2003	2.6	3.1	1.6	24.3	-0.7	
5	2004	3.5	3.8	3.7	19.3	-0.6	
6	2005	5.8	3.6	1.3	23.3	-1.1	
7	2006	8.4	3.9	0.2	26.9	-1.1	
8	2007	9.9	4.7	0.9	27.1	-0.9	
9	2008	9.2	2.8	0.2	15.1	-1.3	
10	2009	4.8	2.8	3.5	16.4	-0.2	
11	2010	5.2	2.2	2.4	22.2	0.2	
12							

Cancel

<Back

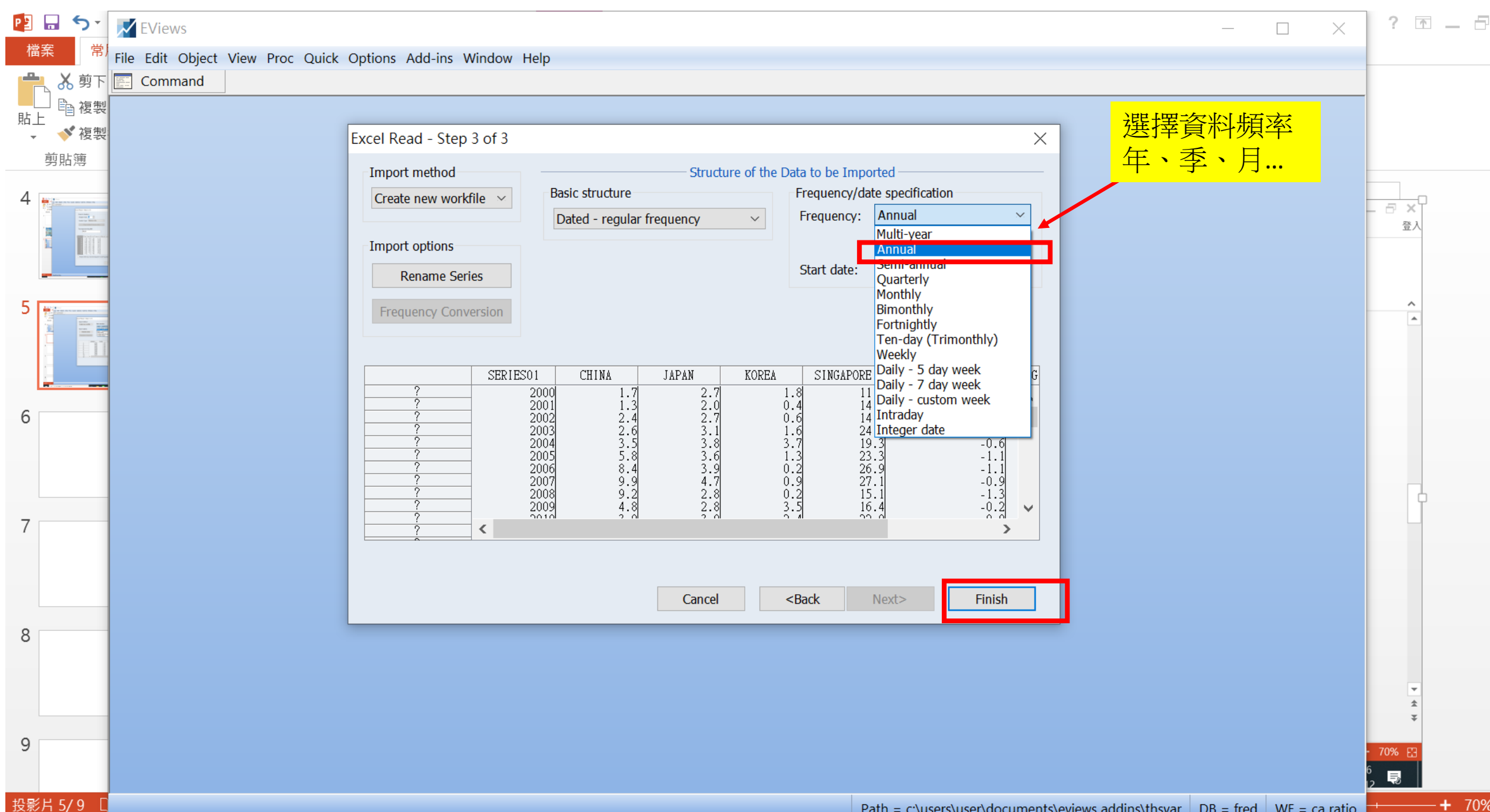
Next>

Finish

投影片 5/9

Path = c:\users\user\documents\evIEWS addins\thsvar DB = fred WF = ca ratio

下午 10:46



Excel Read - Step 3 of 3

Import method

Create new workfile

Import options

Rename Series

Frequency Conversion

Structure of the Data to be Imported

Basic structure

Dated - regular frequency

Frequency/date specification

Frequency: Annual

Start date:

- Annual
- Multi-year
- Annual
- Semi-annual
- Quarterly
- Monthly
- Bimonthly
- Fortnightly
- Ten-day (Trimonthly)
- Weekly
- Daily - 5 day week
- Daily - 7 day week
- Daily - custom week
- Intraday
- Integer date

	SERIES01	CHINA	JAPAN	KOREA	SINGAPORE
?	2000	1.7	2.7	1.8	11
?	2001	1.3	2.0	0.4	14
?	2002	2.4	2.7	0.6	14
?	2003	2.6	3.1	1.6	24
?	2004	3.5	3.8	3.7	19.3
?	2005	5.8	3.6	1.3	23.3
?	2006	8.4	3.9	0.2	26.9
?	2007	9.9	4.7	0.9	27.1
?	2008	9.2	2.8	0.2	15.1
?	2009	4.8	2.8	3.5	16.4
?	2010	2.2	2.8	2.4	22.2

Cancel

<Back

Next>

Finish

選擇資料頻率
年、季、月...

檔案 常

剪下 複製 貼上 複製 剪貼簿

4

5

6

7

8

9

EViews

File Edit Object View Proc Quick Options Add-ins Window Help

Command

Excel Read - Step 3 of 3

Import method

Create new workfile

Import options

Rename Series

Frequency Conversion

Structure of the Data to be Imported

Basic structure

Dated - regular frequency

Frequency/date specification

Frequency: Annual

Start date: 2000

	SERIES01	CHINA	JAPAN	KOREA	SINGAPORE	ADVANCED_ECONOMIES	EMERG
2000	2000	1.7	2.7	1.8	11.1	-0.9	
2001	2001	1.3	2.0	0.4	14.4	-0.9	
2002	2002	2.4	2.7	0.6	14.9	-0.8	
2003	2003	2.6	3.1	1.6	24.3	-0.7	
2004	2004	3.5	3.8	3.7	19.3	-0.6	
2005	2005	5.8	3.6	1.3	23.3	-1.1	
2006	2006	8.4	3.9	0.2	26.9	-1.1	
2007	2007	9.9	4.7	0.9	27.1	-0.9	
2008	2008	9.2	2.8	0.2	15.1	-1.3	
2009	2009	4.8	2.8	3.5	16.4	-0.2	
2010	2010	2.2	2.2	2.4	22.2	2.2	
2011	2011						

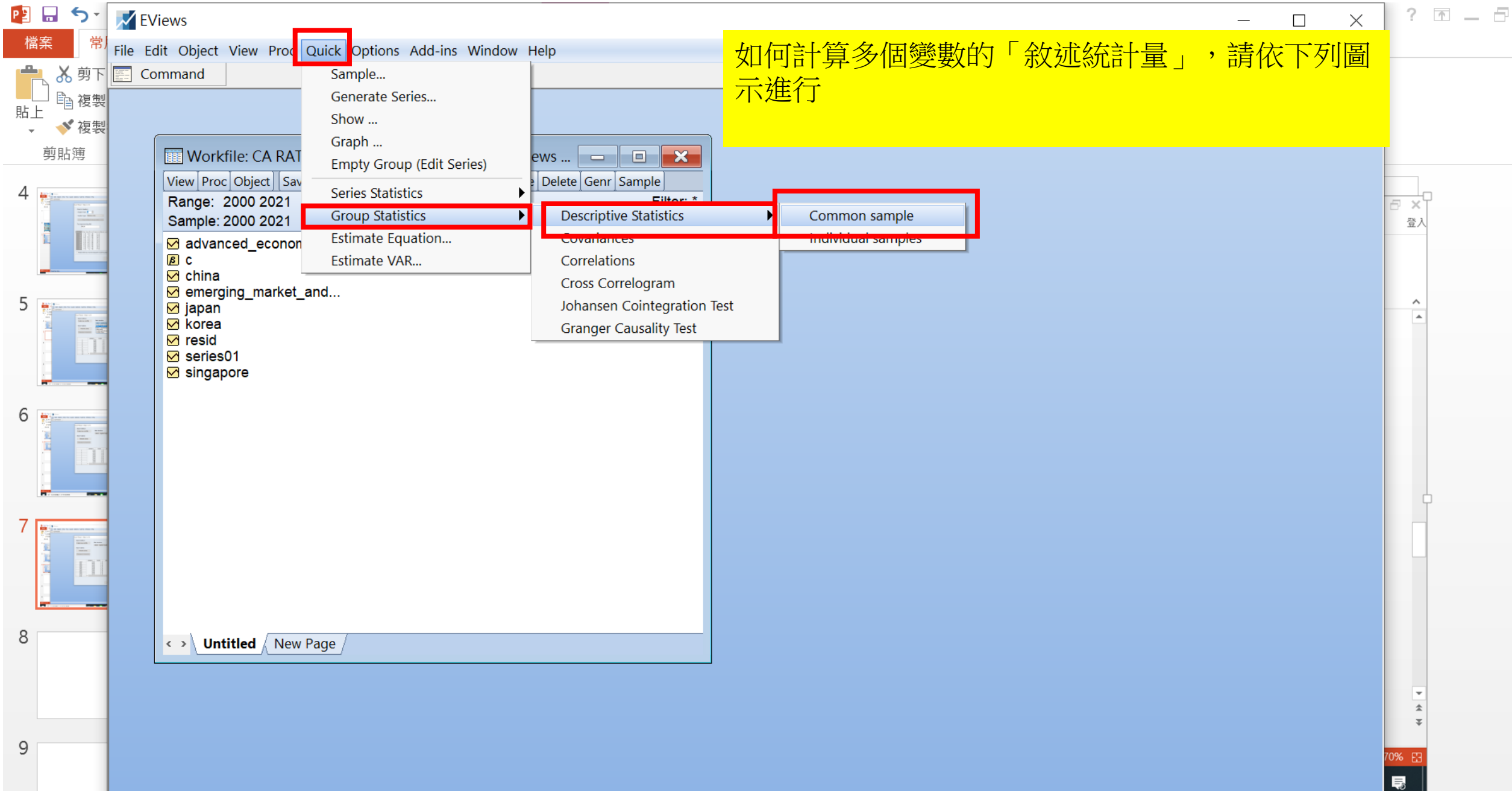
Cancel

<Back

Next>

Finish

輸入起
始日期



如何計算多個變數的「敘述統計量」，請依下列圖示進行

檔案

剪下

複製

貼上

剪貼簿

4

5

6

7

8

9

EViews

File Edit Object View Proc Quick Options Add-ins Window Help

Command

Workfile: CA RATIO - (c:\users\user\documents\views ...)

View Proc Object Save Freeze Details+/- Show Fetch Store Delete Genr Sample

Range: 2000 2021 -- 22 obs Filter: *

Sample: 2000 2021 -- 22 obs Order: Name

☒ advanced_economies

☒ c

☒ china

☒ emerging_market_and...

☒ japan

☒ korea

☒ resid

☒ series01

☒ singapore

Series List

List of series groups and/or series expressions

china japan korea singapore

OK Cancel

Untitled New Page

登入

登入

70%

Path = c:\users\user\documents\views addins\thsvar DB = fred WF = ca ratio

下午 10:49 2020/10/12

在這裡輸入文字來搜尋

輸入變數名稱

檔案

常

剪下

複製

貼上

複製

剪貼簿

5

6

7

8

9

EViews

File Edit Object View Proc Quick Options Add-ins Window Help

Command

Workfile: CA RATIO - (c:\users\user\documents\views ...)

View Proc Object Save Freeze Details+/- Show Fetch Store Delete Genr Sample

Range: 2000 2021 -- 22 obs Filter: *

Sample: [G] Group: UNTITLED Workfile: CA RATIO::Untitled\

advan

c

china

emerg

japan

korea

resid

series

singap

	CHINA	JAPAN	KOREA	SINGAPORE
Mean	3.204545	2.850000	3.140909	18.47727
Median	2.300000	2.950000	3.600000	17.40000
Maximum	9.900000	4.700000	7.200000	27.10000
Minimum	0.400000	0.800000	0.200000	11.10000
Std. Dev.	2.765515	1.114301	2.167434	4.228242
Skewness	1.353513	-0.410570	0.156796	0.654241
Kurtosis	3.657134	2.174582	1.814046	2.608136
Jarque-Bera	7.113158	1.242619	1.379426	1.710209
Probability	0.028536	0.537240	0.501720	0.425239
Sum	70.50000	62.70000	69.10000	406.5000
Sum Sq. Dev.	160.6095	26.07500	98.65318	375.4386
Observations	22			

Copy

Paste

Paste Special...

Select non-empty cells

Edit +/-

Title...

Save table to disk...

如何將報表結果複製 至word、 excel等檔案中

⇒ 圈選敘述統計結果

⇒ 按滑鼠右鍵，選 copy

Path = c:\users\user\documents\views addins\thsvar

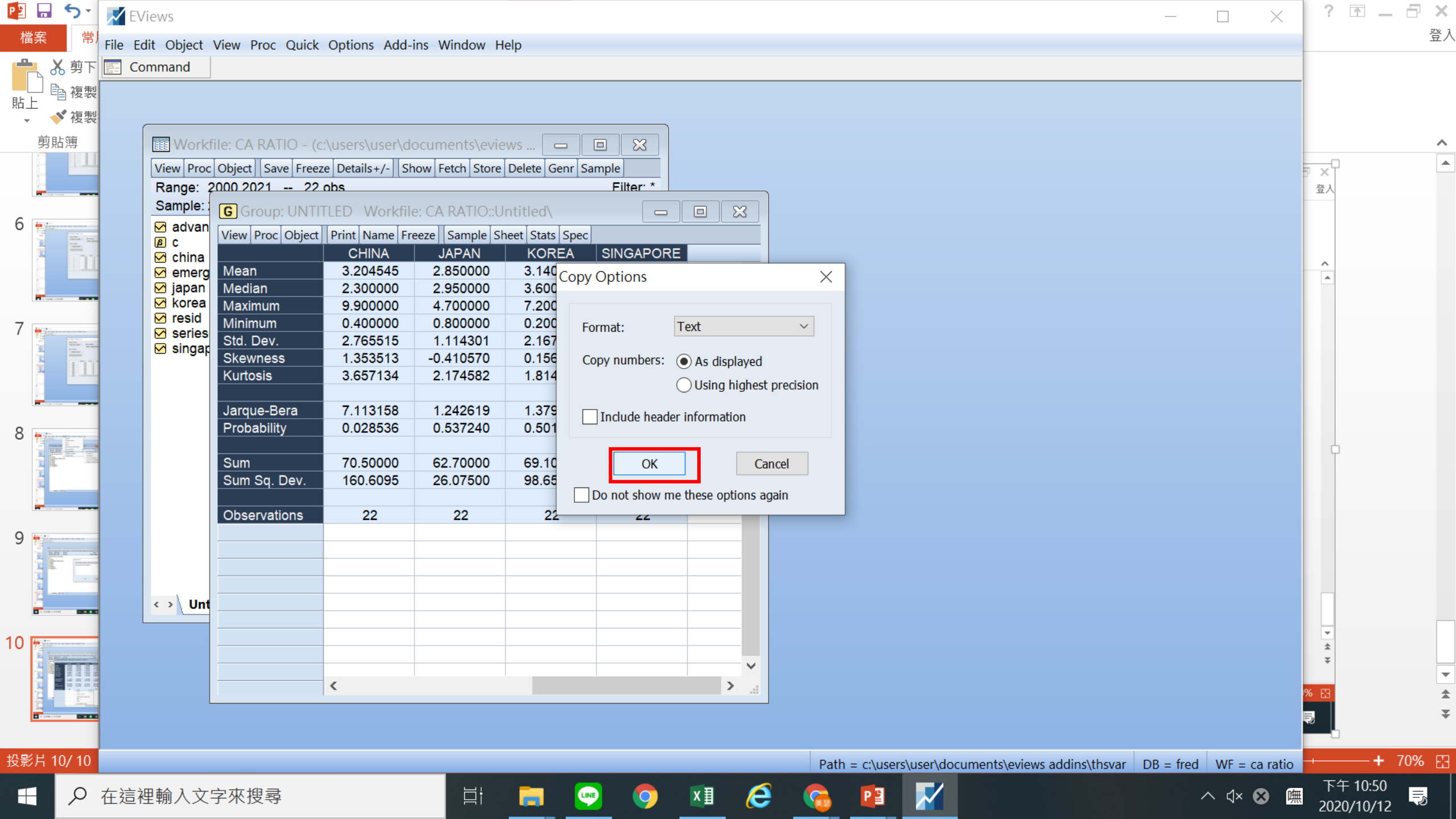
DB = fred

WF = ca ratio

70%

下午 10:50

2020/10/12



Workfile: CA RATIO - (c:\users\user\documents\views ...)

View Proc Object Save Freeze Details+/- Show Fetch Store Delete Genr Sample

Range: 2000 2021 -- 22 obs Filter: *

Sample: [G] Group: UNTITLED Workfile: CA RATIO::Untitled\

- ☒ advan
- ☒ c
- ☒ china
- ☒ emerg
- ☒ japan
- ☒ korea
- ☒ resid
- ☒ series
- ☒ singap

View	Proc	Object	Print	Name	Freeze	Sample	Sheet	Stats	Spec
				CHINA		JAPAN		KOREA	SINGAPORE
Mean			3.204545			2.850000		3.140	
Median			2.300000			2.950000		3.600	
Maximum			9.900000			4.700000		7.200	
Minimum			0.400000			0.800000		0.200	
Std. Dev.			2.765515			1.114301		2.167	
Skewness			1.353513			-0.410570		0.156	
Kurtosis			3.657134			2.174582		1.814	
Jarque-Bera			7.113158			1.242619		1.379	
Probability			0.028536			0.537240		0.501	
Sum			70.50000			62.70000		69.10	
Sum Sq. Dev.			160.6095			26.07500		98.65	
Observations			22			22		22	

Copy Options

Format: Text

Copy numbers: ☒ As displayed ☐ Using highest precision

☐ Include header information

OK Cancel

☐ Do not show me these options again

檔案

常

剪下

複製

貼上

複製

剪貼簿

K5

A

1

2

3

4

5

6

7

8

9

10

11

12

13

14

15

16

17

18

19

20

21

22

2000

2001

2002

2003

2004

2005

2006

2007

2008

2009

2010

2011

2012

2013

2014

2015

2016

2017

2018

2019

2020

EViews

File Edit Object View Proc Quick Options Add-ins Window Help

Command

Workfile: CA RATIO - (c:\users\user\documents\views ...)

View Proc Object Save Freeze Details+/- Show Fetch Store Delete Genr Sample

Range: 2000 2021 -- 22 obs Filter: *

Sample: [G] Group: UNTITLED Workfile: CA RATIO::Untitled\

View

Proc

Object

Print

Name

Freeze

Sample

Sheet

Stats

Spec

Group Members

Spreadsheet

Dated Data Table

Graph...

Descriptive Stats

Covariance Analysis...

N-Way Tabulation...

Tests of Equality...

Principal Components...

Correlogram (1) ...

Cross Correlation (2) ...

Long-run Covariance...

Unit Root Test...

Cointegration Test

Granger Causality...

Label

JAPAN	KOREA	SINGAPORE
2.850000	3.140909	18.47727
2.950000	3.600000	17.40000
4.700000	7.200000	27.10000
0.000000	0.200000	11.10000
1.114301	2.167434	4.228242
-0.410570	0.156796	0.654241
2.174582	1.814046	2.608136
1.242619	1.379426	1.710209
0.537240	0.501720	0.425239
62.70000	69.10000	406.5000
26.07500	98.65318	375.4386
22	22	22

進一步畫這些變數趨勢圖

選「View」=>再選「Graph」

就緒

Path = c:\users\user\documents\views addons\thsvar DB = fred WF = ca ratio

下午 10:52

檔案 常

剪下 複製 貼上 複製

剪貼簿

8

9

10

11

12

投影片 12/ 12

EViews

File Edit Object View Proc Quick Options Add-ins Window Help

Command

Workfile: CA RATIO - (c:\users\user\documents\views ...)

View Proc Object Save Freeze Details+/- Show Fetch Store Delete Genr Sample

Range: 2000 2021 -- 22 obs Filter: *

Sample: Group: UNTITLED Workfile: CA RATIO (Untitled)

Graph Options

Option Pages

- Graph Type
 - Basic type
- Frame & Size
- Axes & Scaling
- Legend
- Graph Elements
- Quick Fonts
- Templates & Objects

Graph type

General:

Basic graph

Specific:

- Line & Symbol
- Bar
- Spike
- Area
- Area Band
- Mixed
- Dot Plot
- Error Bar
- High-Low (Open-Close)
- Scatter
- XY Line
- XY Area
- XY Bar (X-X-Y triplets)
- Pie
- Distribution
- Quantile - Quantile
- Boxplot

Details

Graph data: Raw data

Orientation: Normal - obs axis on bottom

Axis borders: None

Multiple series: Single graph

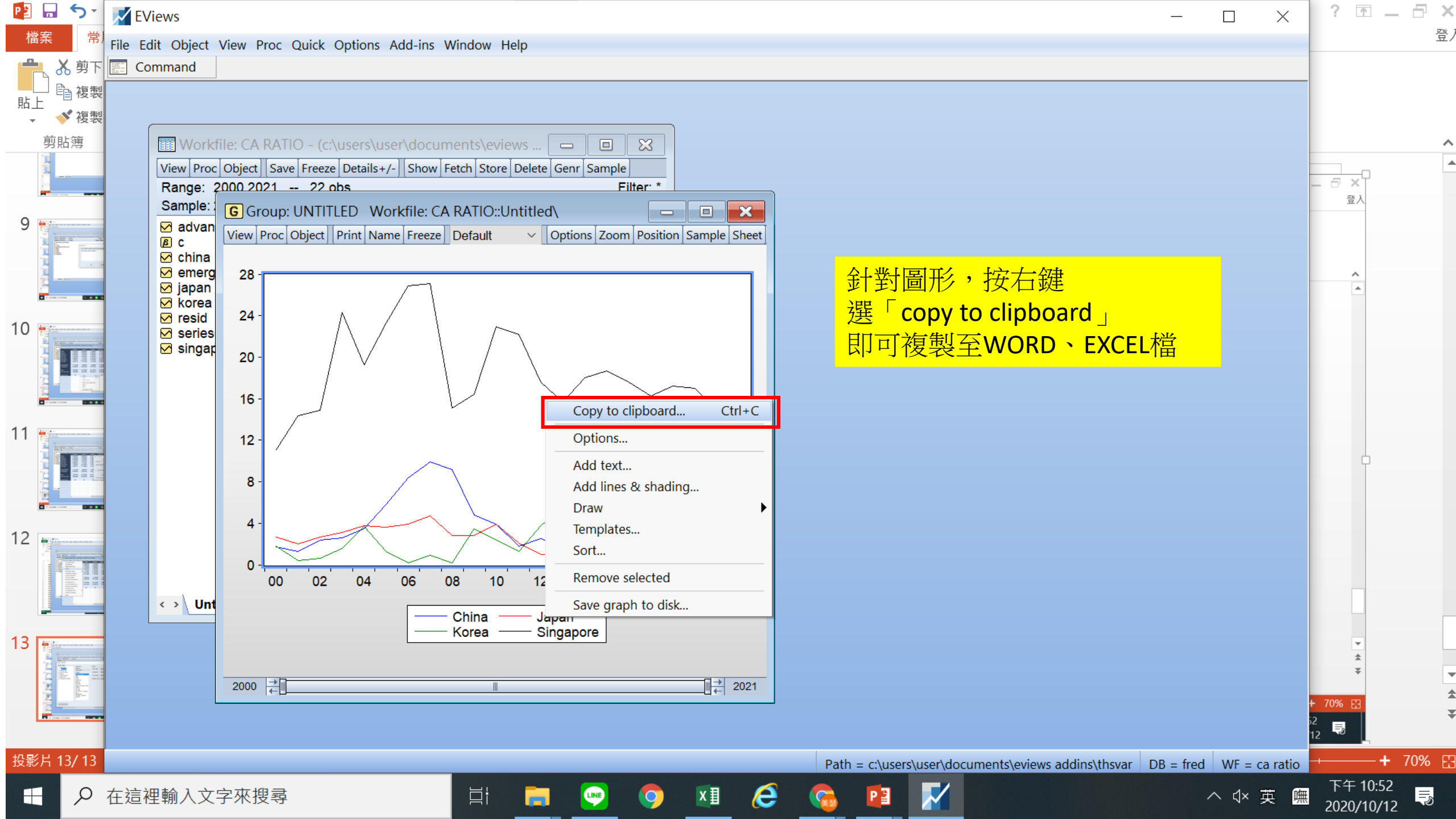
Undo Page Edits

OK Cancel

登入

S

+ 100%



針對圖形，按右鍵
選「copy to clipboard」
即可複製至WORD、EXCEL檔